

PURLINE organic flooring to click
 Technical information | Installation instructions

Preparations and important information before starting installation

Tools for installing PURLINE organic flooring to click

[1] Floor fitter's knife with trapezoidal blade | Folding ruler / tape measure | tapping block | White rubber hammer | Spacers | Pencil / T-square

Checking the goods

[2] Before starting work, make sure that the delivered goods are in perfect condition. Claims cannot be made against goods that have been cut or installed. We guarantee that each delivery will consist of goods from the same batch.

Acclimatisation

[3] PURLINE organic flooring to click should be left to acclimatise for at least 24 hours before installing it in the areas, taking the following requirements into account:

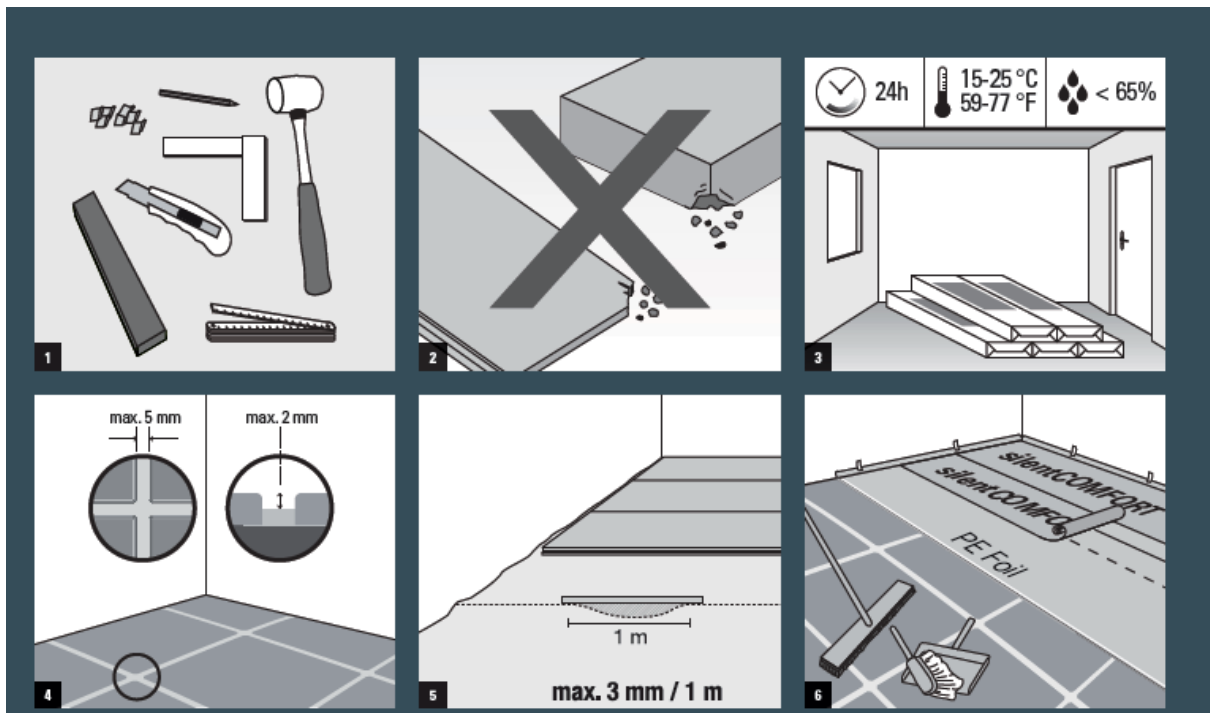
Room air temperature >18°C. Floor temperature should be at least 15°C and no more than 25°C. Relative humidity should not be higher than 65%. The boxes are to be left to acclimatise in small stacks, unopened and lying horizontally.

Subfloor

[4/5] Prepare the subfloor in accordance with DIN 18365 German construction contract procedures (VOB): Part C: Flooring work. The subfloor must follow the generally accepted rules of the trade and the state of the art, and be permanently dry, even, clean and able to bear load. In the case of calcium sulphate heated screed (CA), a residual moisture level of 0.3 CM % (deviating from DIN 18560) must not be exceeded.

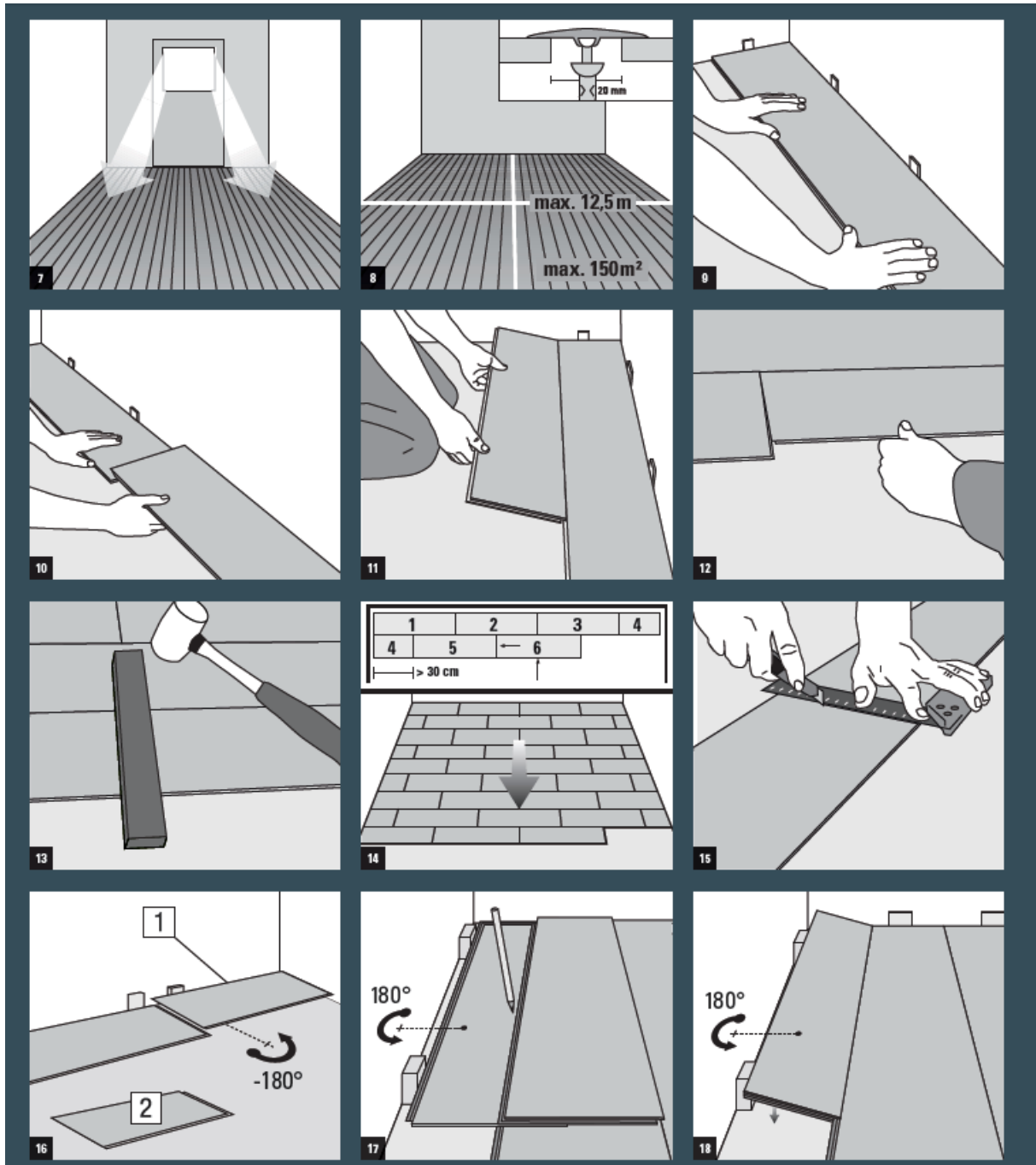
The maximum height tolerance of 3 mm per running metre must not be exceeded in accordance with DIN 18202 "Tolerances in building construction", Table 3, Row 4. Textile floor coverings must be removed! Underfloor heating: only up to a surface temperature of max. 27°C (observe EN 1264-2). [6] Subfloors that cannot be guaranteed to be permanently dry are to be protected against rising damp with a PE film (vapour barrier) at least 0.2 mm thick that is arranged so that it overlaps and act as a trough. Use a suitable insulation mat to stabilise the panel system.

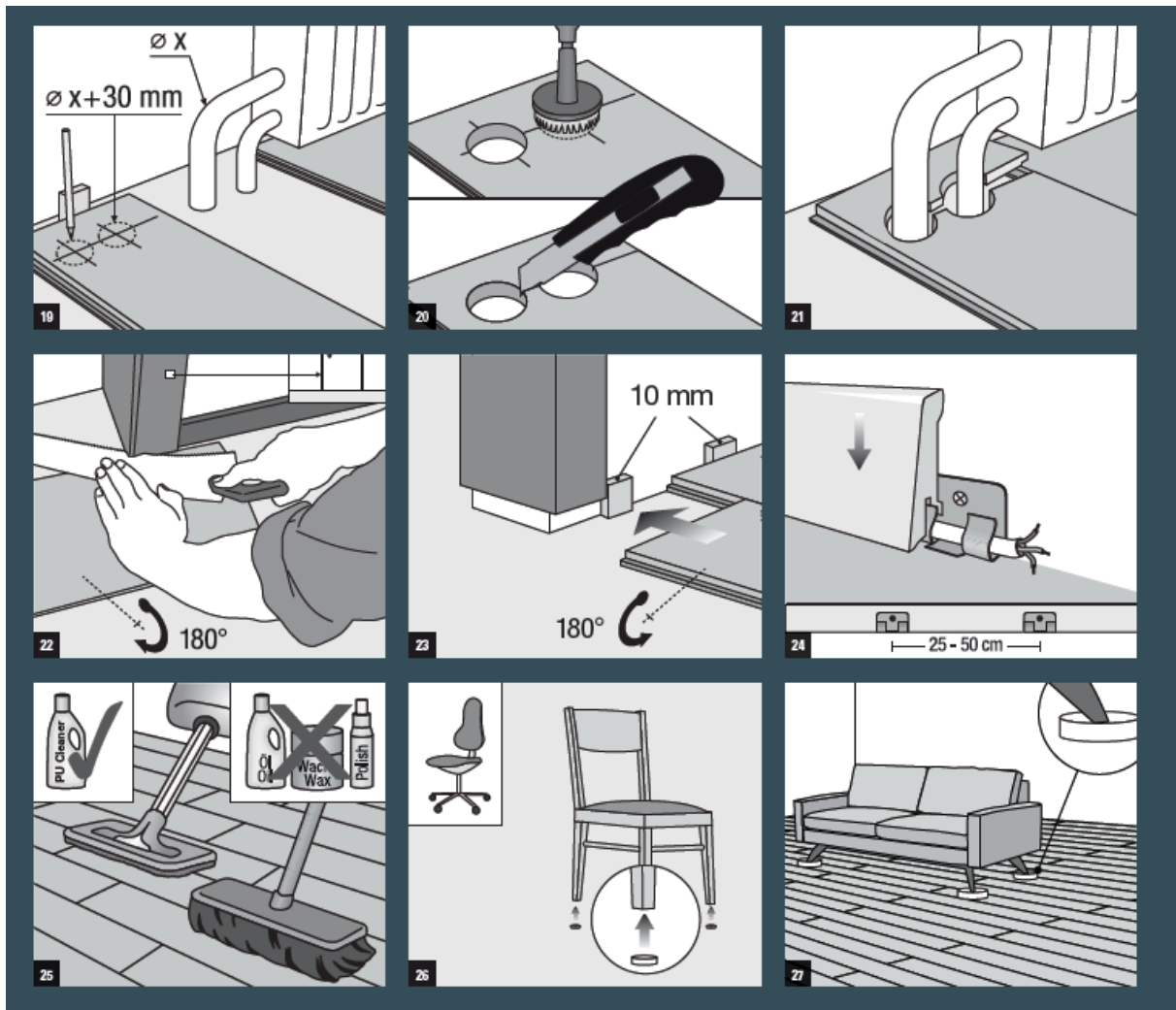
For warranty reasons, we recommend using the wineo silentCOMFORT insulation mat.



Installing PURLINE organic flooring to click

[7-18] Generally, install the elements parallel to the main source of light. Always work from left to right with the tongue side facing the wall. Use a tapping block to quickly, evenly and safely engage the face side connections. Lay it lengthways across the face side connection of the floor element and lock them by hitting the block with a white rubber hammer. Place the subsequent rows along the longitudinal groove at a 30° angle and apply slight pressure to lower them. Separate several rooms / spaces in the door areas and passageways (suitable profiles). Maintain clearances of at least 5 mm to all fixed objects and walls. End offset of at least 30 cm. For pipe ducts, observe Figure [19-21]. Trim existing wooden door frames, if necessary [22/23].





Important information regarding completing the installation

Remove all spacing blocks. [24] Never fasten skirting boards to the floor. We recommend using the wineo Clipholder fastening system. Seal expansion joints / pipe ducts, etc. with profiles / rosettes or with a PE cord seal and joint sealant.

Cleaning and care

[25] The area must be cleaned once installation is complete. On an everyday basis, the flooring can be cleaned with a brush, vacuum cleaner or mop. In the event of heavy soiling, use a PU cleaner. All staining and aggressive substances must be removed from the surface immediately. Please also read our detailed cleaning and care instructions and recommended cleaning agents at www.wineo.de

[26] Chair, table and furniture legs must be provided with a suitable pads or furniture glides. Only use soft chair and furniture casters.

[27] For items of furniture with a high static compressive load, appropriate distribution of the load must be ensured for the weight (e.g. load distribution plates). Contact areas of chair and furniture glides must lie completely flat and be rounded at the edges. Fitted items of furniture (e.g. kitchen units) should, where possible, be dismantled / removed in order to ensure the temperature-related change in dimensions of the flooring and to prevent the panels from buckling.

If you have any questions, please contact our service hotline on: 0049-5237-609-0

Version 10/2016